

Artisan Drawer

Assembly Guide

Branch

The new way of working you've been waiting for.

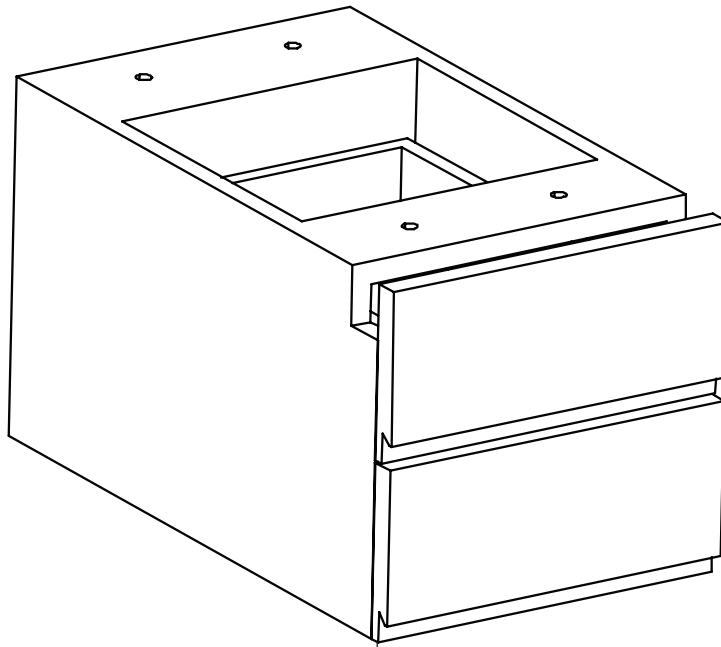
Scan here for a digital copy
of your assembly guide.



Caution

- Make sure to read the guide completely before assembling.
- Check that all components are present before you start the assembly process.
- Use extra caution when assembling this product and have someone assist you. Do not change the specifications, modify this product, or use for any other purpose beyond its intended use as a table.
- Do not sit or stand on the table frame. Do not crawl or lie under the table frame.
- Pay Attention to sharp corners and gently open and close drawers to avoid personal injury.
- Every six months, please make sure all bolts, screws, and knobs are securely tightened to ensure stability.
- Do not open or modify any of the optional power components. Doing so risks electric shock and voids any warranty claims.
- Two-person assembly required.
- If any parts are missing, broken, damaged, or worn, stop use of the product until Branch authorized replacement parts are received.
- Keep this manual for future reference.

Components



Artisan Drawer (x1)

Included Hardware

Allen Key (x1)



M8 x 30mm Screw (x5)



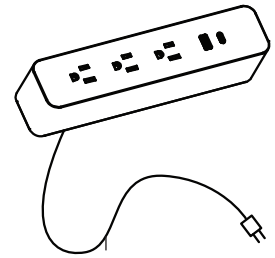
Washer (x4)



Lock Washer (x4)

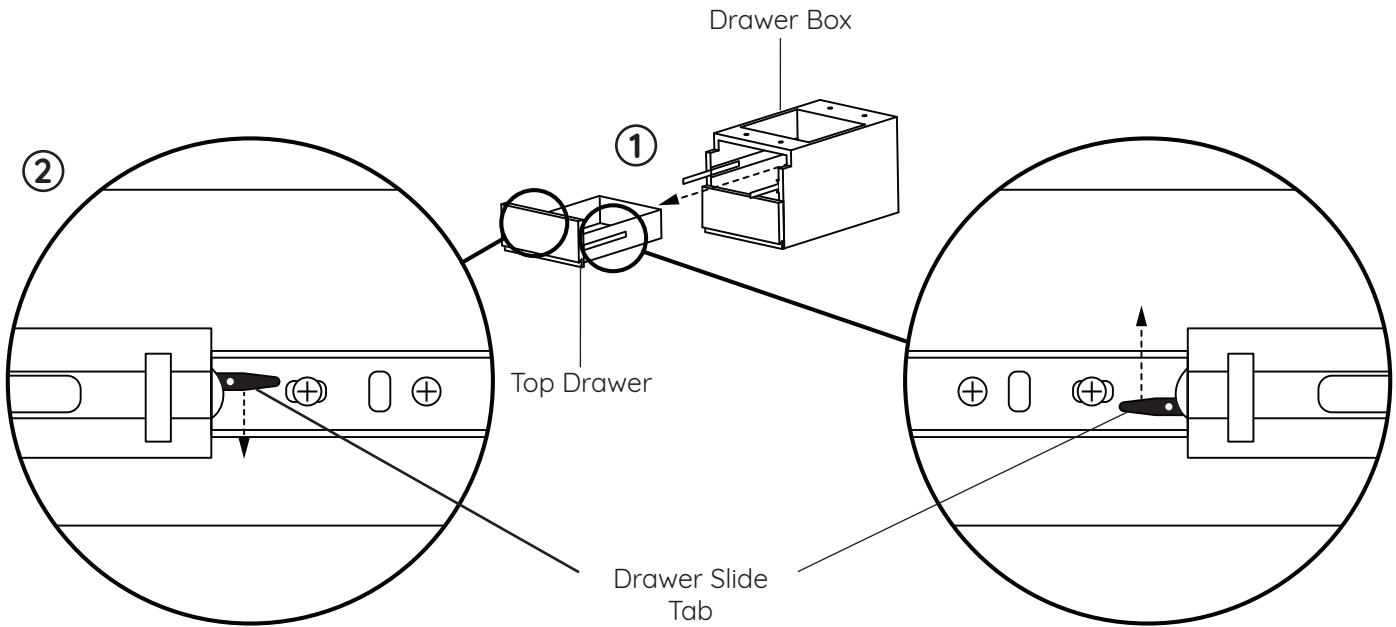


Optional Components



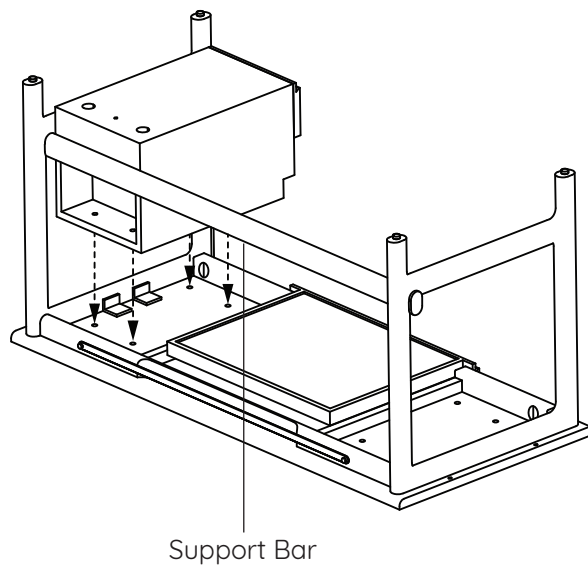
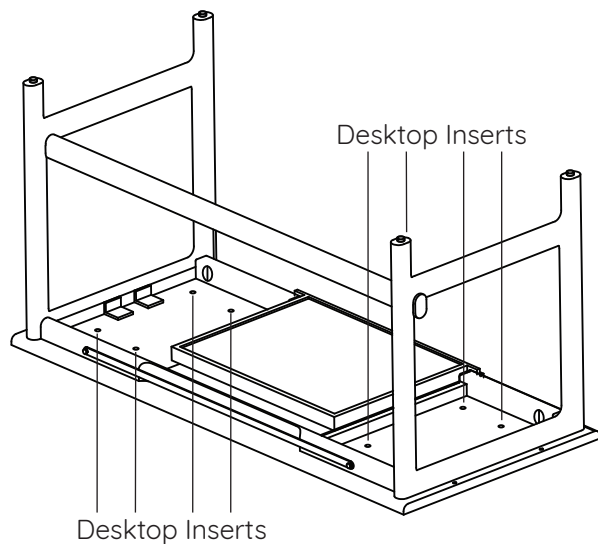
Modular Power

1



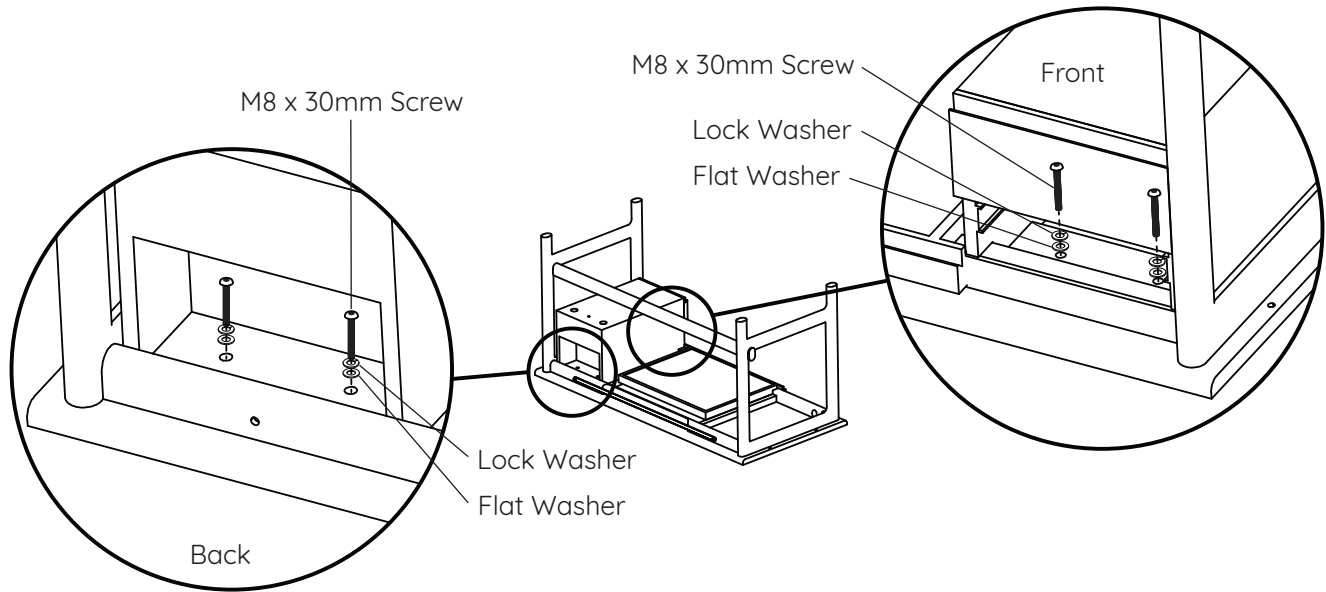
To install the **Artisan Drawer**, first remove the **Top Drawer** by fully extending it outward. Press the **Drawer Slide Tabs**, one side down and the other side up, and then carefully slide the **Top Drawer** out from the **Drawer Box**.

2



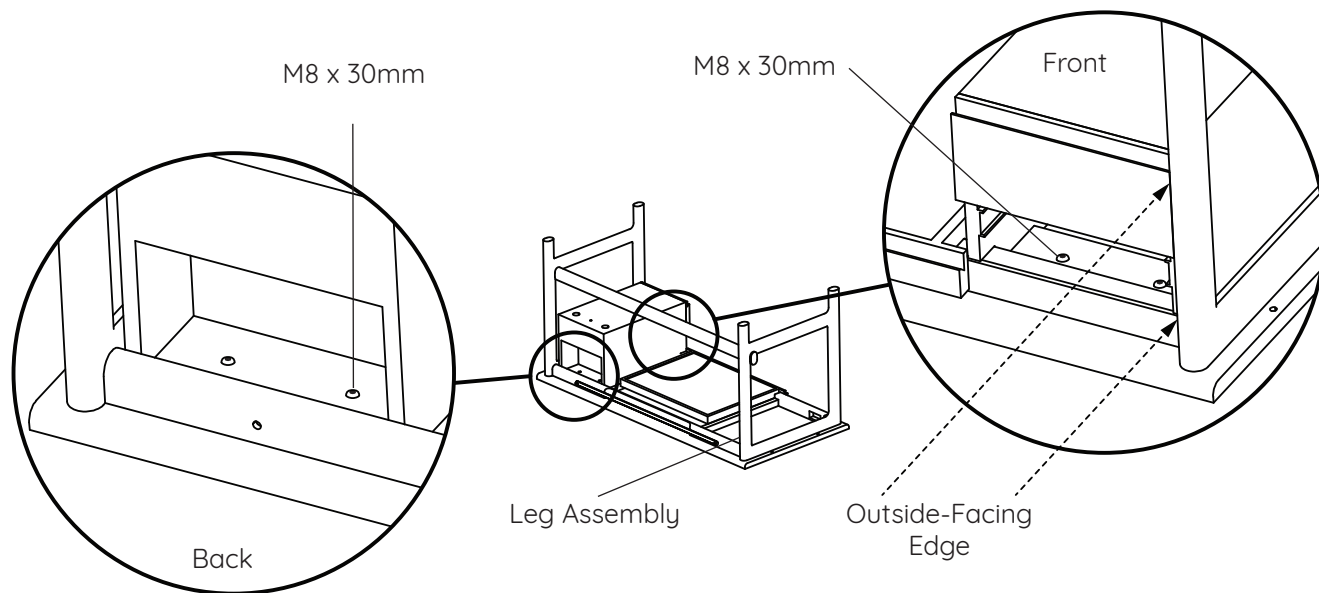
With the help of a friend, lay the **Artisan Desk** upside down on a clean, flat surface. Place the **Artisan Drawer** on the left or right side of the **Desktop** as desired, ensuring that the back of the **Drawer Box** is facing the **Support Bar** (x1). Next, align the **Desktop Inserts** with the 4 holes on the top of the **Drawer Box**.

3



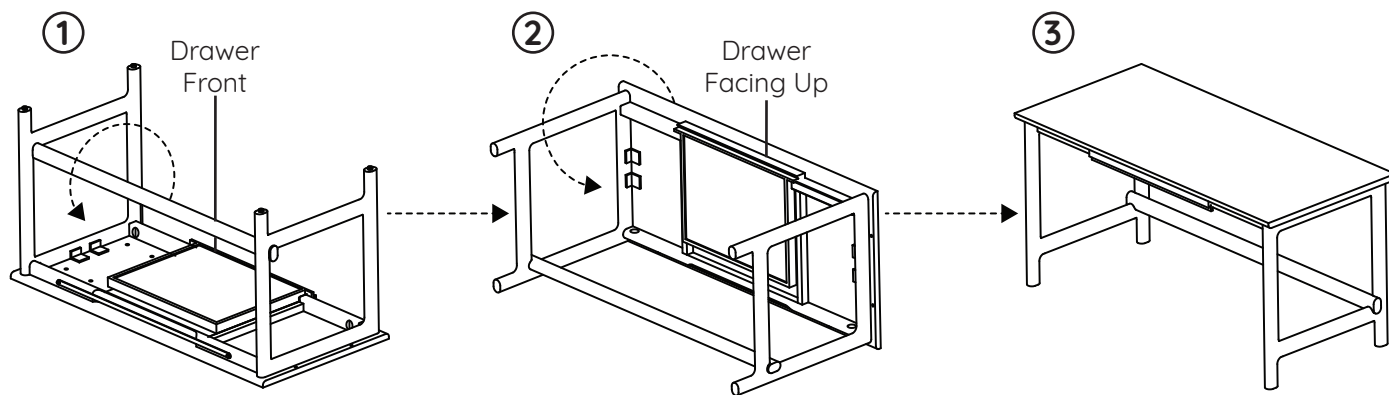
Attach the **Drawer Box** to the **Desktop** (x1) using the **M8 x 30mm Screw** (x4), **Lock Washers** (x4), and **Flat Washers** (x4) included with the drawer hardware set. Hand-tighten all screws; do not fully tighten yet.

4



Finally, align the **Outside-Facing Edge** of the **Drawer Box** to the **Leg Assembly** (x2) and securely tighten the **M8 x 30mm Screw** (x4) with the **Allen Key** (x1). If attaching two **Artisan Drawers**, repeat steps 1, 2, 3, and 4 for the second drawer.

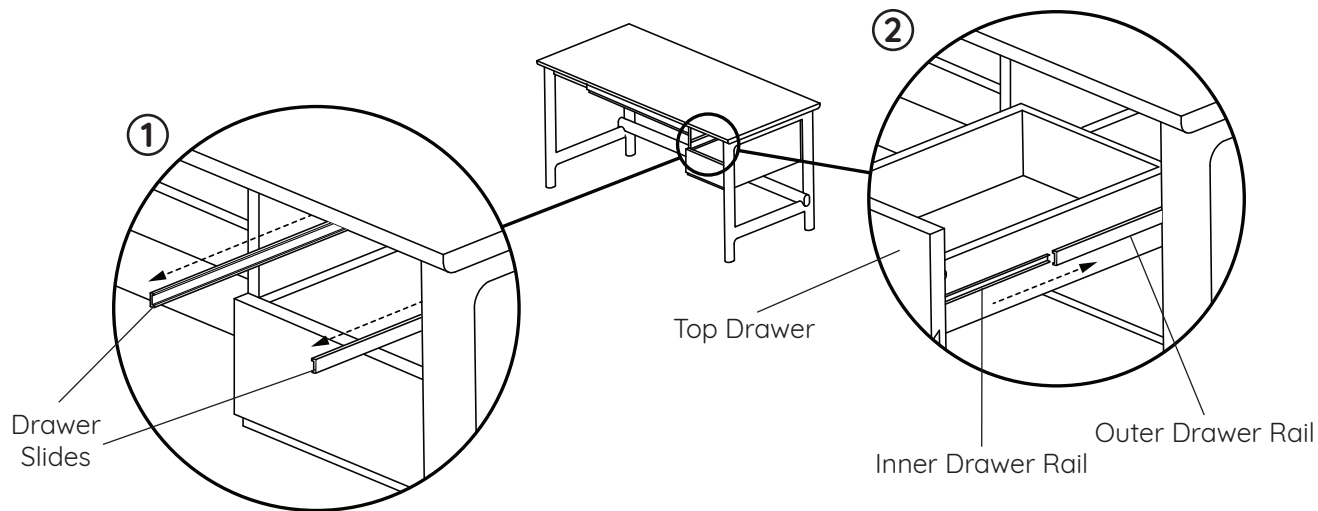
5



With help from a friend, carefully flip the **Artisan Desk** onto its feet.

Note: Drawers may slide open while flipping the desk upright.
When flipping, make sure the desk is turned with the **Center Drawer** facing up.

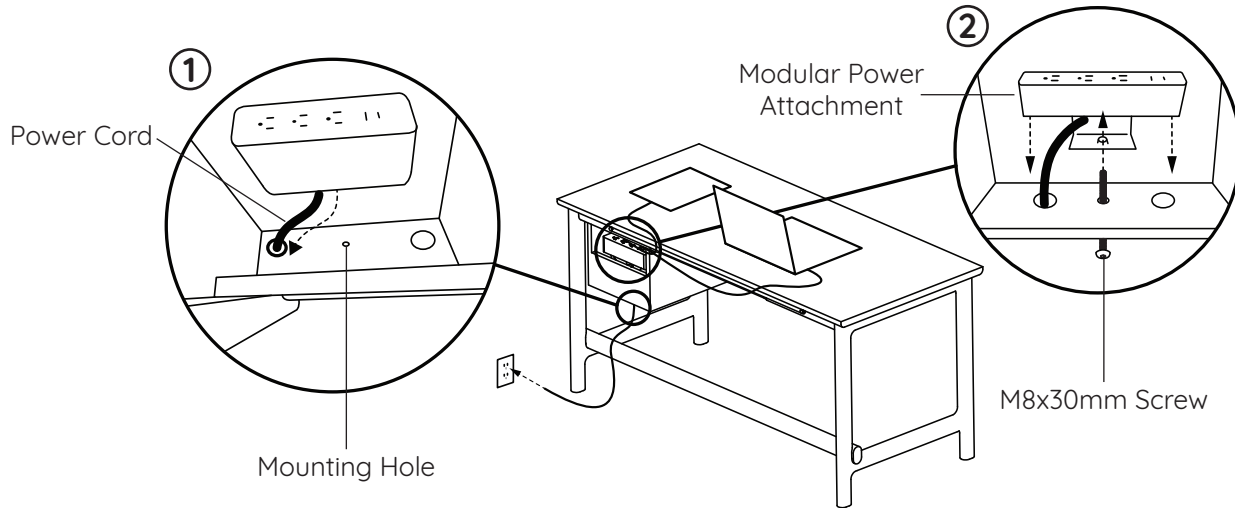
6



Fully extend the **Drawer Slides** on both sides of the **Drawer Box** for better visibility. Carefully align the **Outer Drawer Rails** with the **Inner Drawer Rails**, then gently push the **Top Drawer** in until you hear a “click”. This means the **Drawer Slide Tabs** are locked. Open and close the **Drawer** a few times to confirm smooth operation.

If pushing and pulling in the drawer is difficult, remove the **Top Drawer** and restart the Top Drawer reinstallation process.

7 (Optional Modular Power Attachment)



First, remove the **Thumbscrew** from the **Modular Power**, then guide the **Power Cord** through one of the large holes on the back of the **Artisan Drawer**. Next, align the mounting hole on the **Modular Power Bracket** with the corresponding **Mounting Hole** in the **Artisan Drawer**, and secure it with the included **M8x30mm Screw** (x1). Finally, plug the power cable into the nearest outlet.

Note: This is only compatible with users who have purchased the **Artisan Drawer**.

All Done!

Go ahead, try it out. You may experience what we call an “ahhh” sensation. That’s completely normal. You’re now well equipped for whatever the workday throws at you.

Now, don’t be shy. Show us how it looks!

@branchfurniture
#officebybranch

Contact

Have a question, comment, or suggestion?

hello@branchfurniture.com
branchfurniture.com

V1.0-2025-08-22

Branch